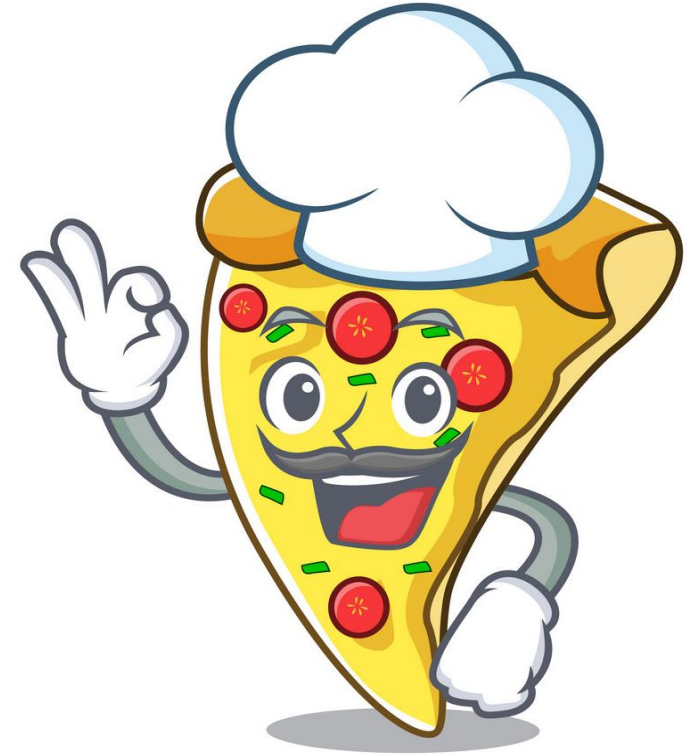


Automated Pizza Locker

Design Review

The Neatest ECE Team (sd22p10)

Annie Liu, Damian Huerta, David Wechsler, Leah Jackson



Locker



NET WEIGHT:
44.53 LBS

ANTI-SKID FEET

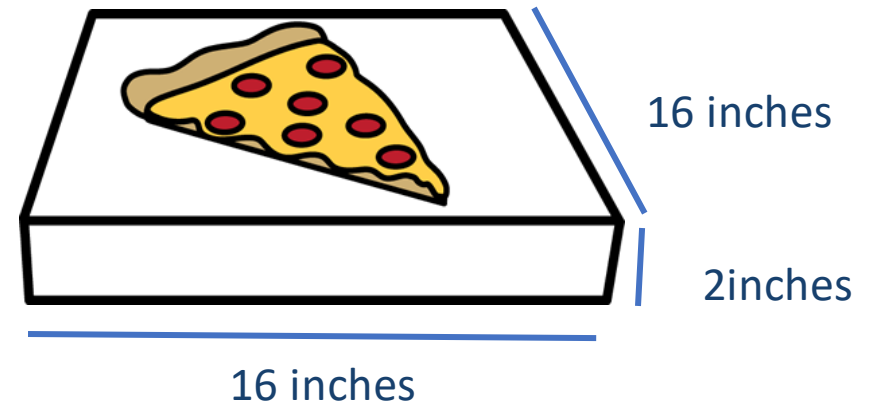
Temperature

- Adjustable, controllable
- 86° to 230°

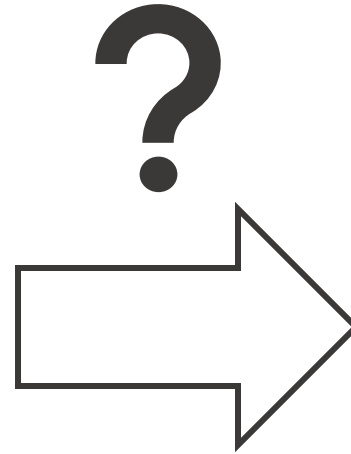
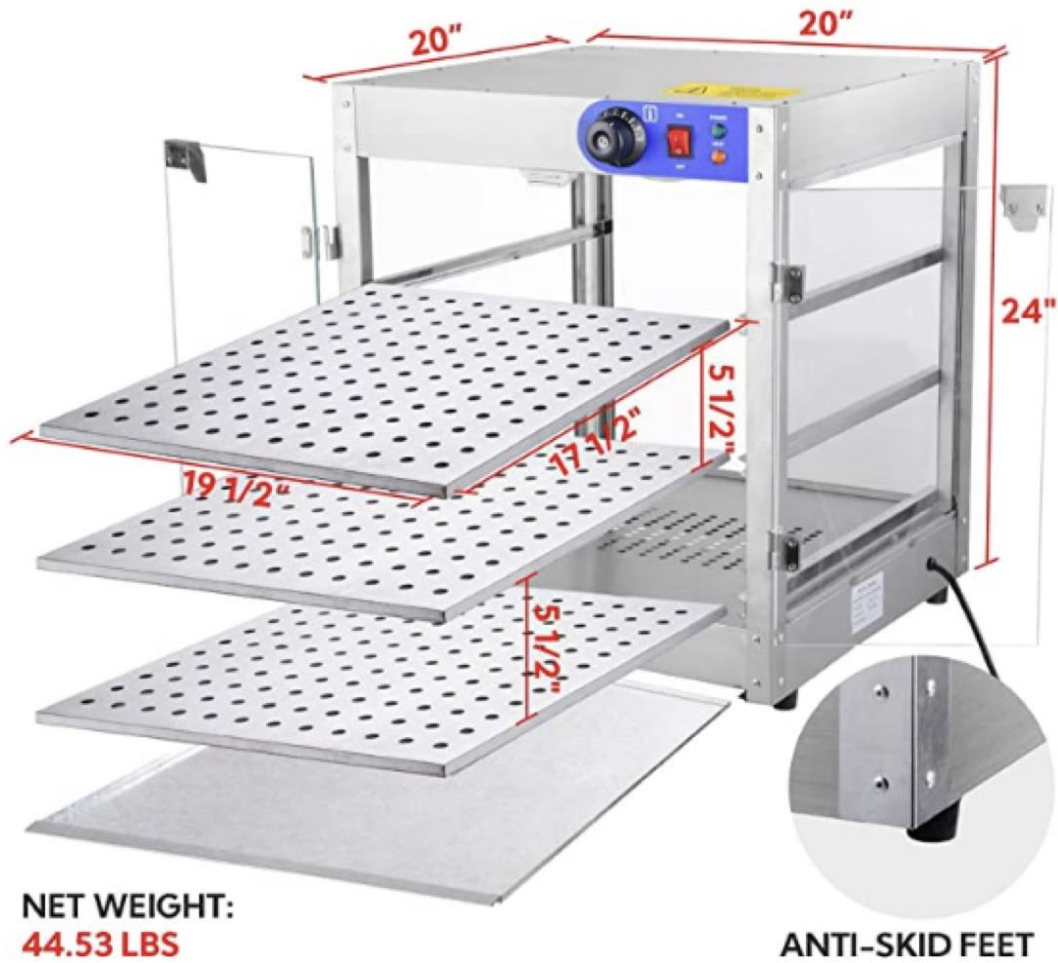
Material

- Metal is durable
- But also expensive
- Metal oven + heating element = good choice

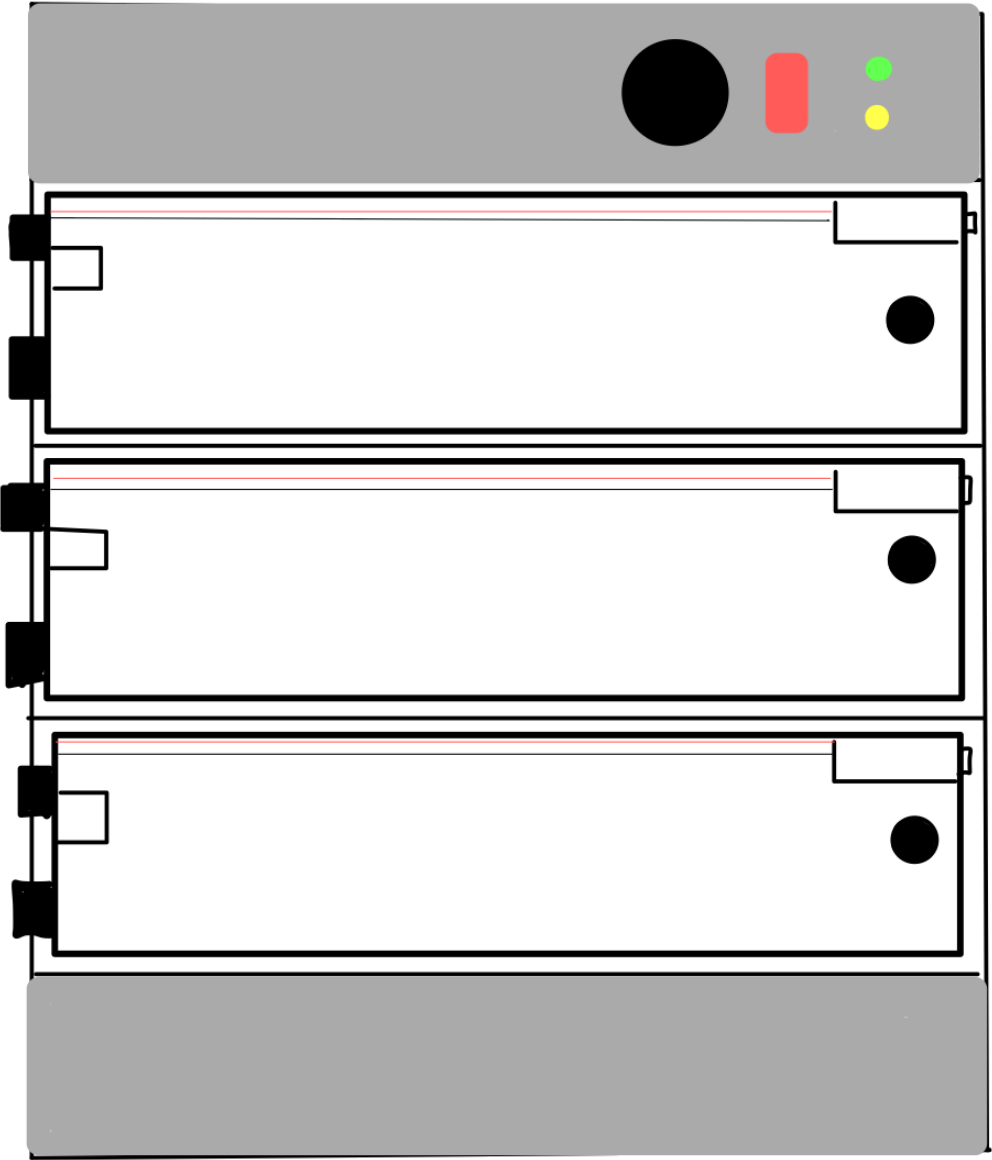
Pizza Box Dimensions – XL



Locker



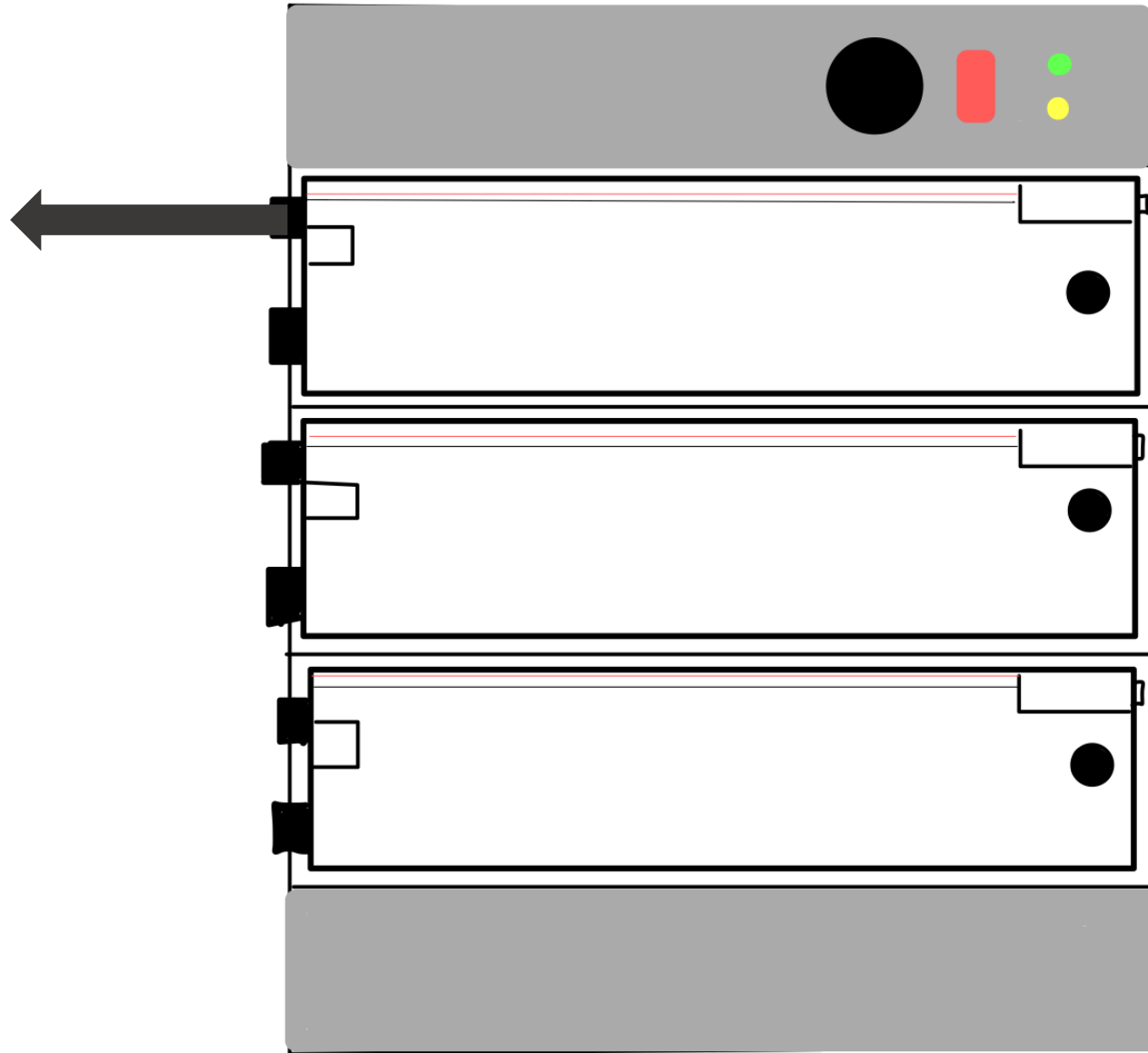
Locker Design



Locker Design



Door Hinge



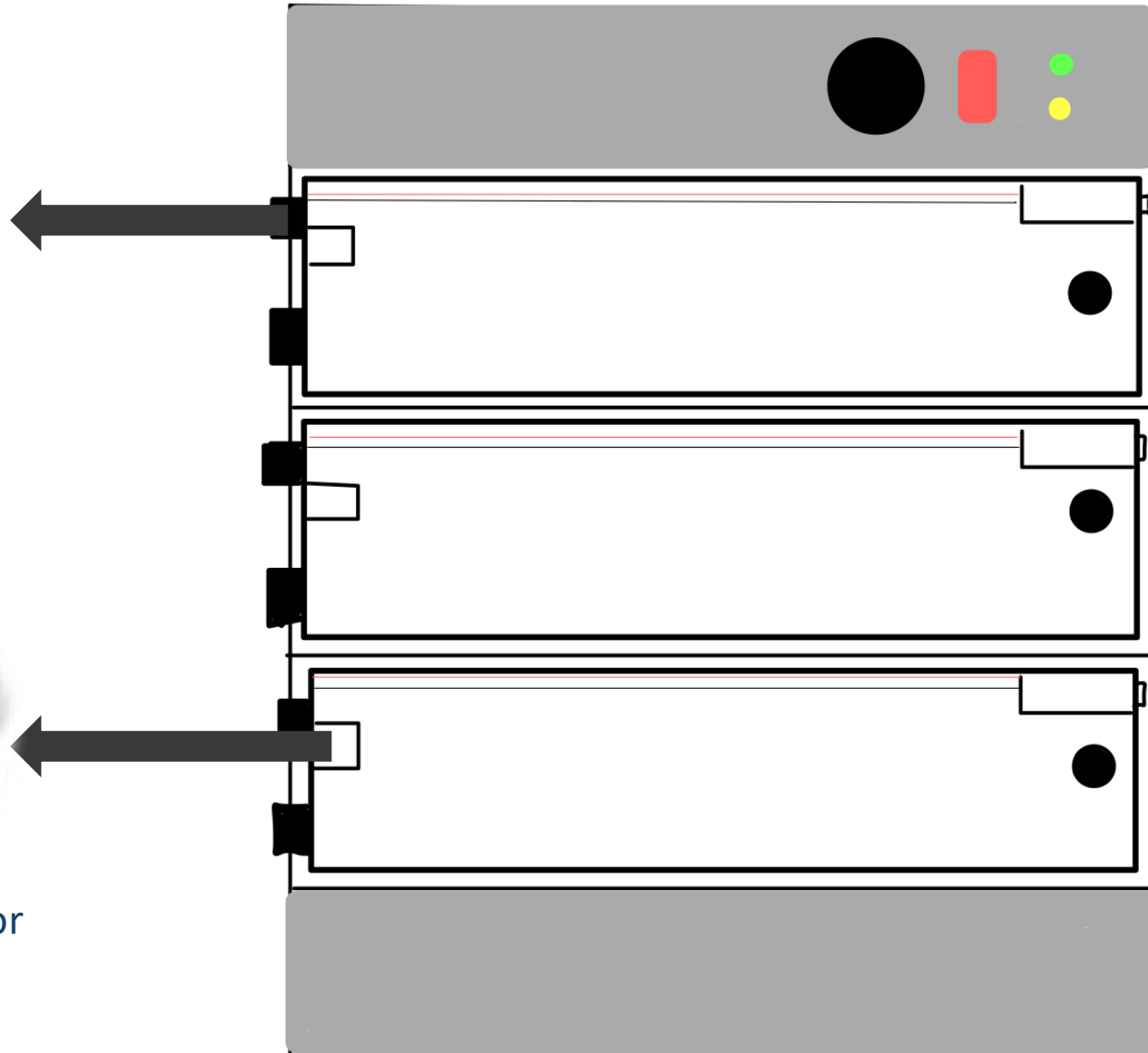
Locker Design



Door Hinge



Temperature Sensor



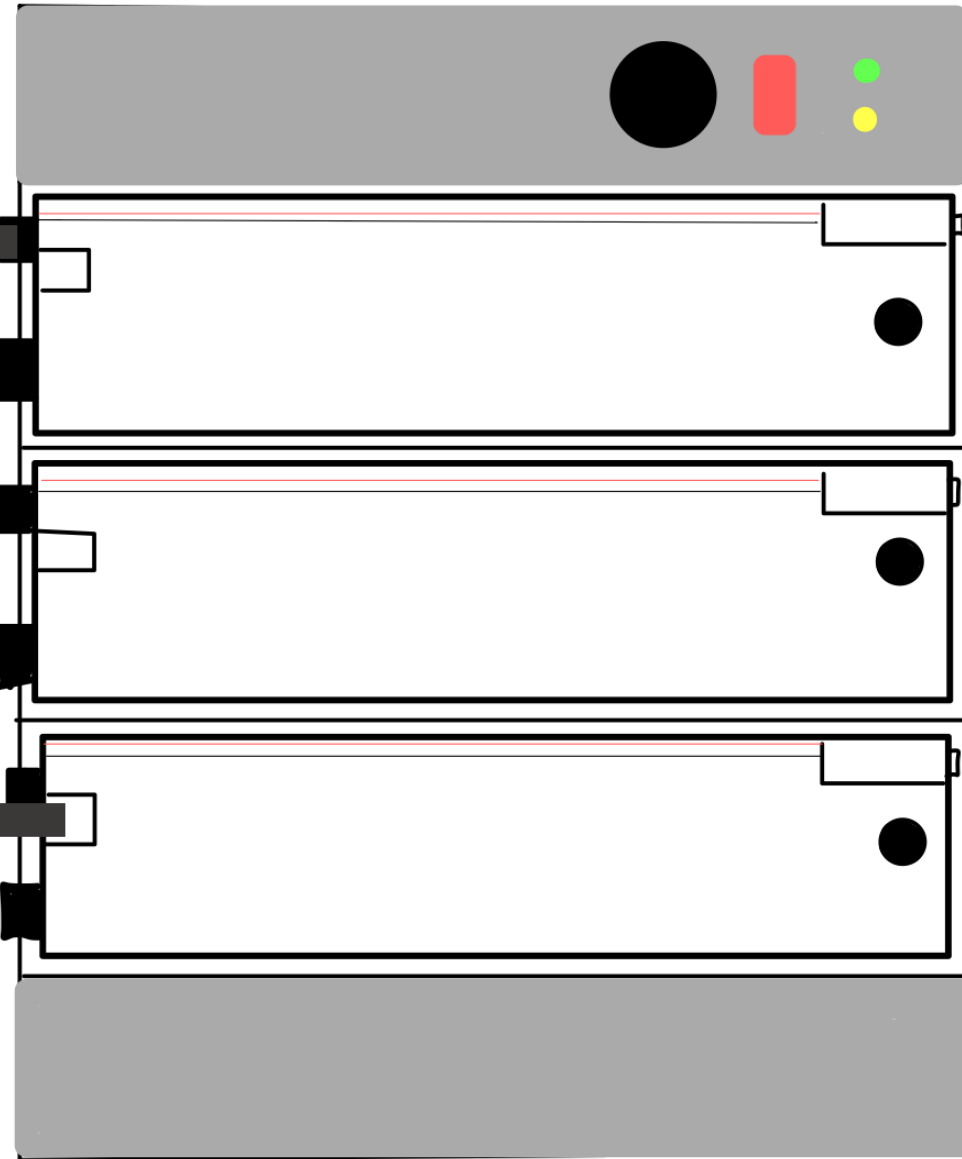
Locker Design



Door Hinge

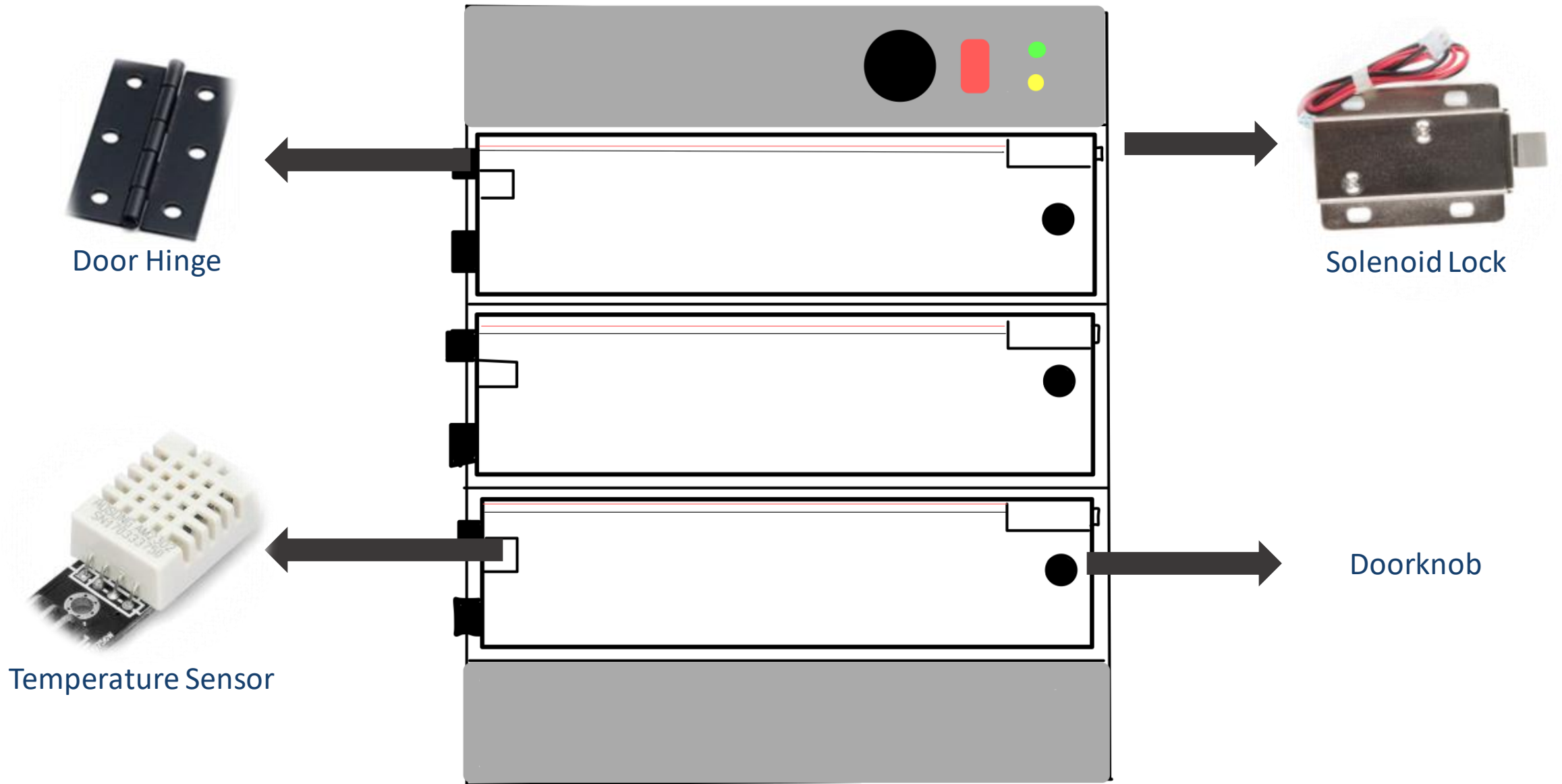


Temperature Sensor

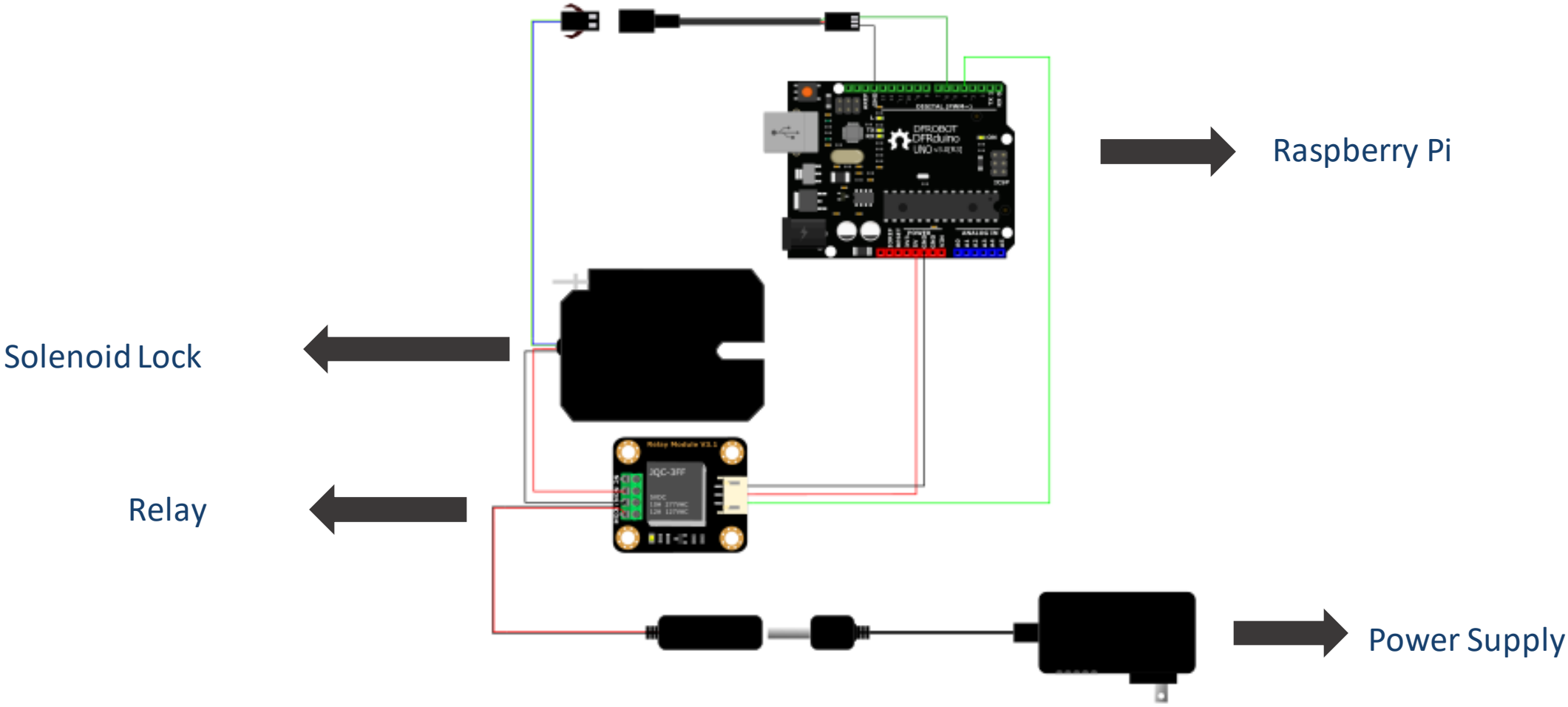


Solenoid Lock

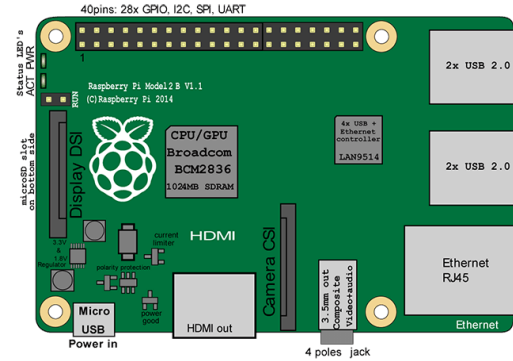
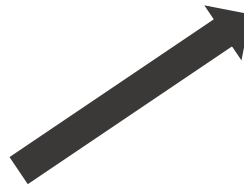
Locker Design



Solenoid Subsystem



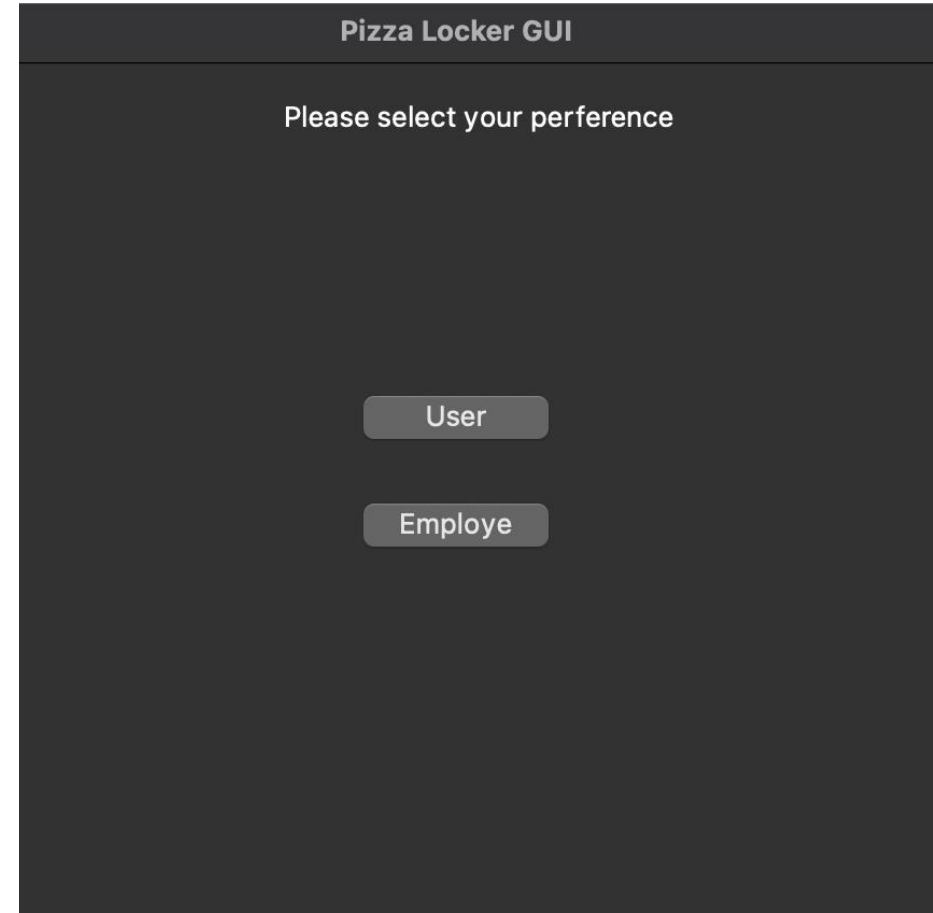
Barcode Scanner Subsystem

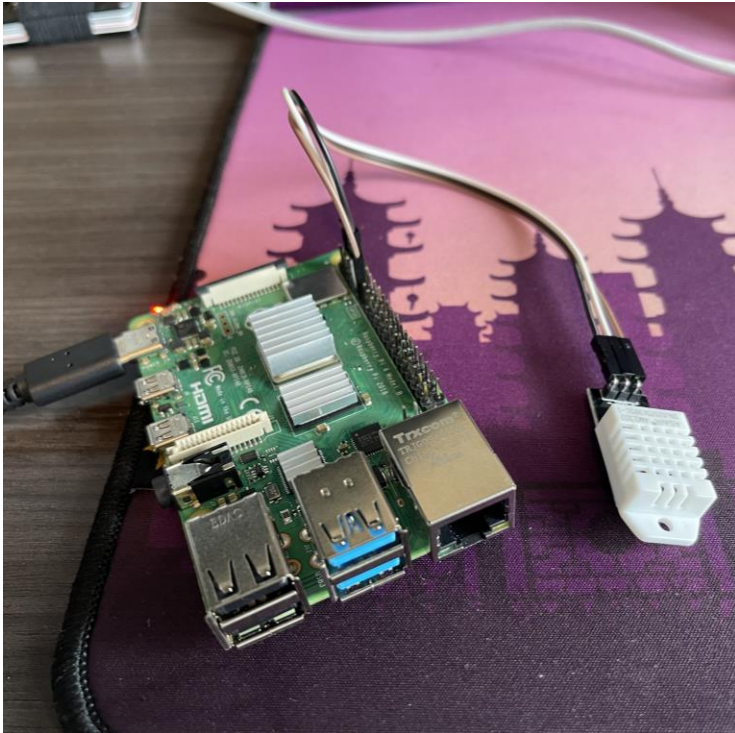


barcodes = {"5418762109345": locker #}
lockers= {"locker #": GPIO Pin #}

Micro-Controller Sensors/GUI

- Running on python3 virtual environment
- Utilizing PyQt5 GUI library
- Selecting preference prompts barcode read and display of barcode ASCII representation
 - Barcode read code still in development
 - Utilizing evdev python library





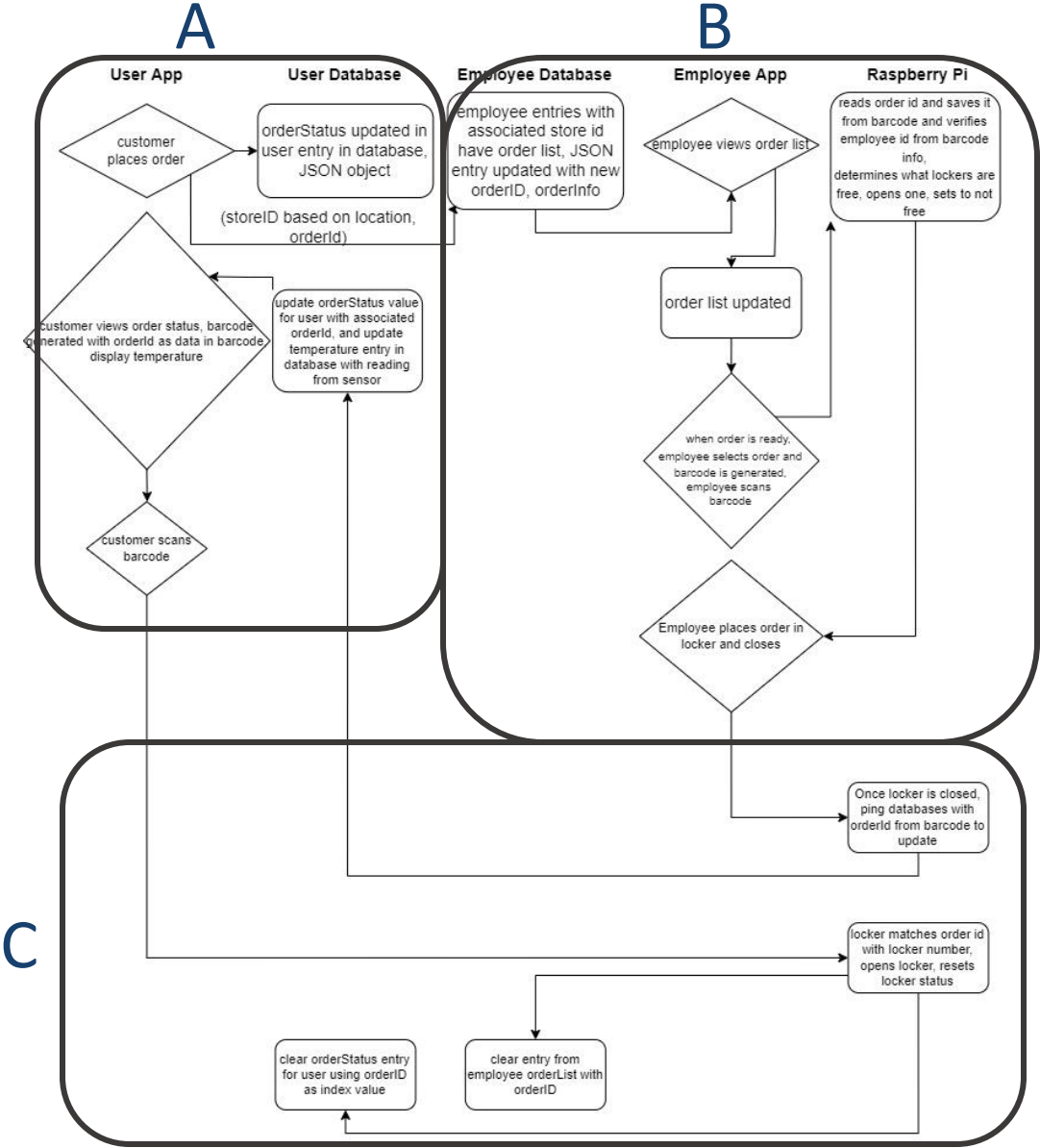
Micro- Controller/GUI

- Temperature sensor uses 5V, ground, and 1 GPIO pin
- Measurements read using RPi.GPIO python library.
- Eventually data will be sent to user application periodically

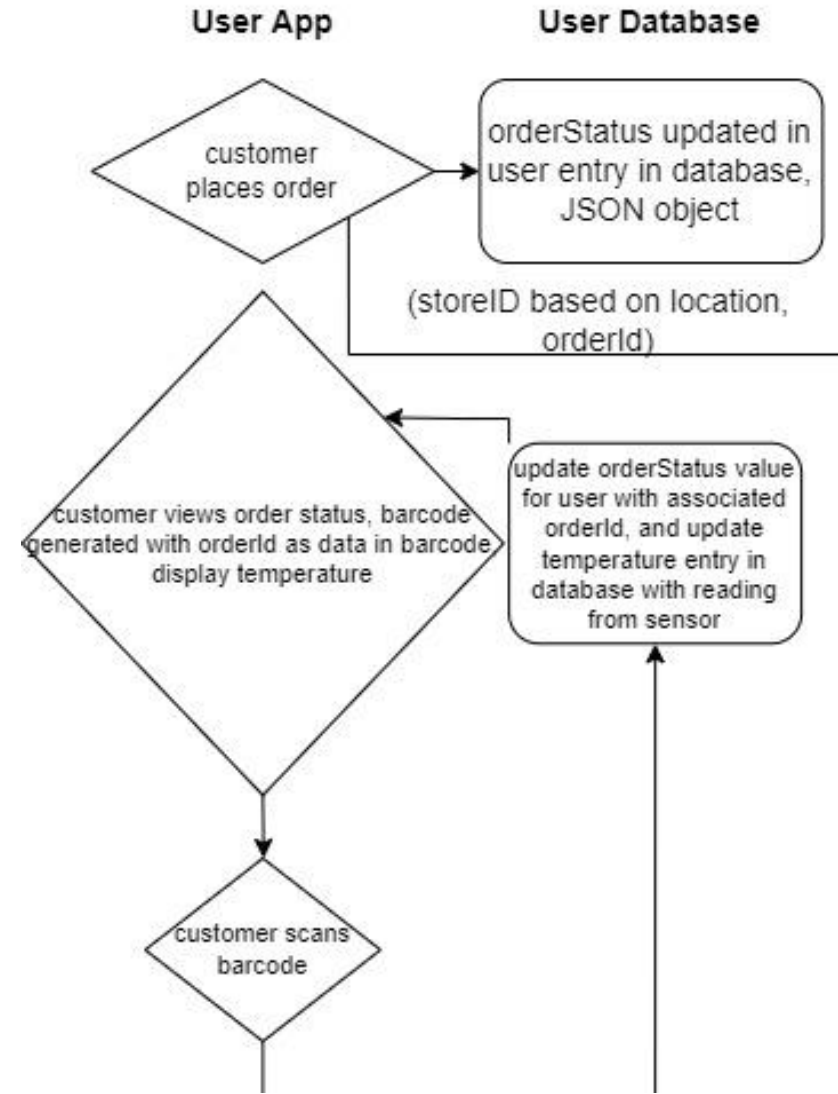
```
setting up sensor
```

```
reading sensor  
humidity: 14.7% Temp: 22.1 C or 71.78 F  
humidity: 14.7% Temp: 22.1 C or 71.78 F  
humidity: 14.7% Temp: 22.1 C or 71.78 F  
finished reading sensor
```

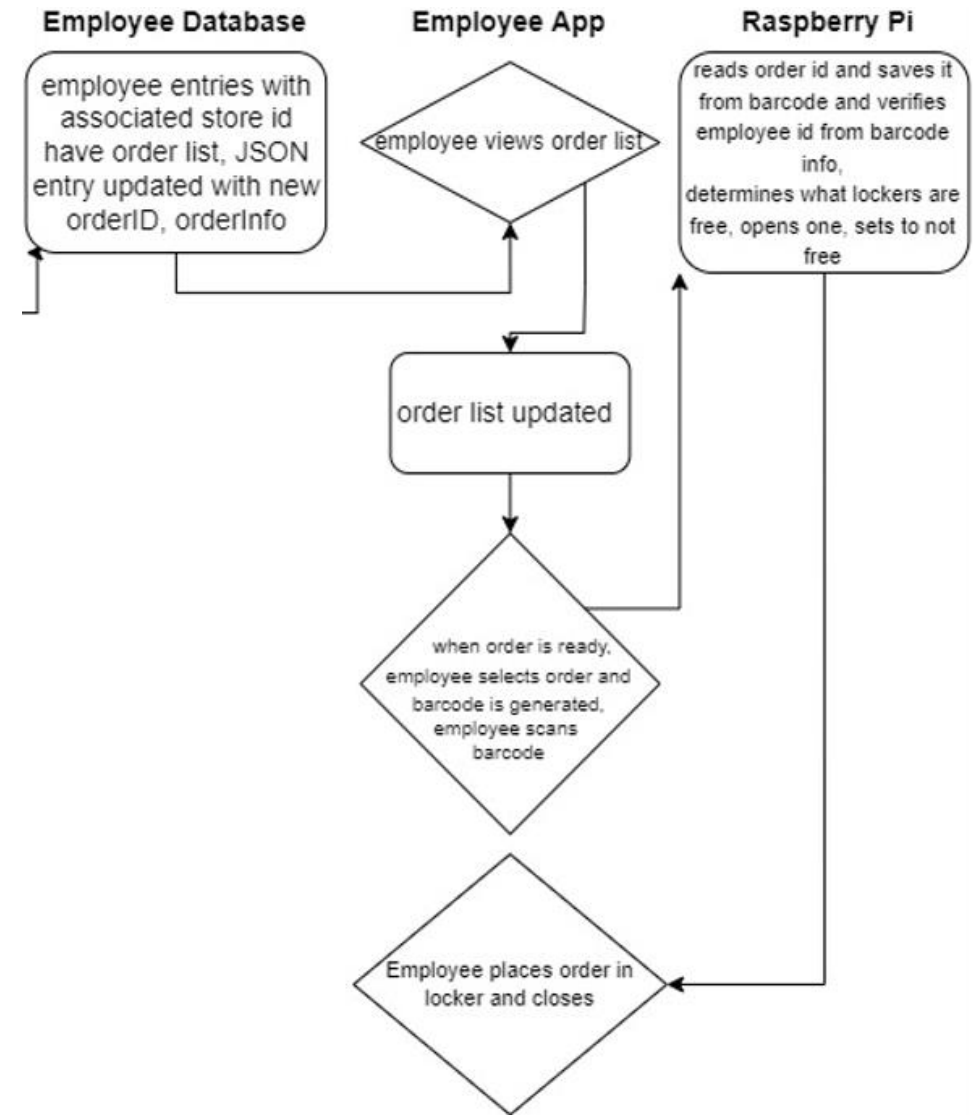

Software Flow Diagram



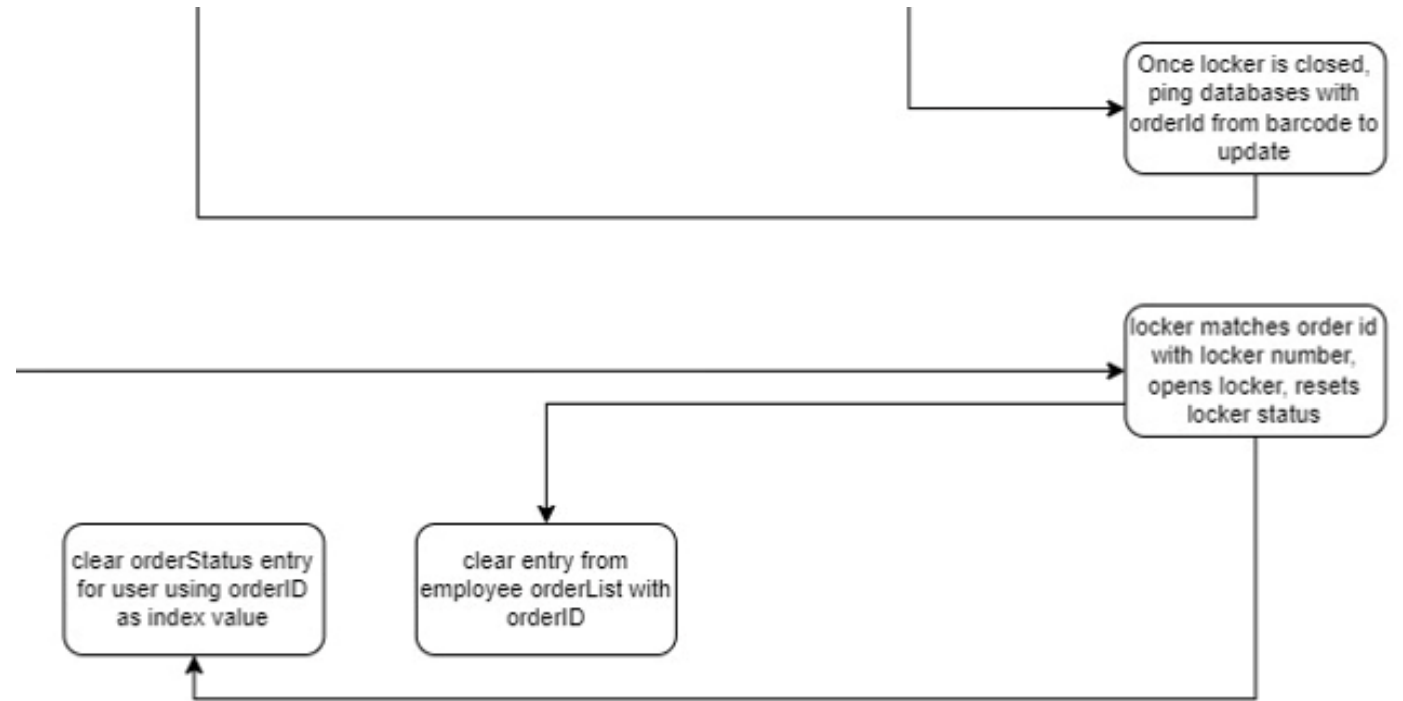
Software Flow Diagram A



Software Flow Diagram B



Software Flow Diagram C



Software Design

- Communication between Application and Raspberry Pi
 - AWS API Gateway
 - Lambda Functions for API Requests
 - DynamoDB, a NoSQL database, for user/employee information
- User/Employee Application
 - React Native, a cross-platform development tool
 - React Native Javascript will handle interface and application interaction with AWS services

UI Design

